

When it Really Matters...

The 81X and 78 sprockets you need
from the name you can trust

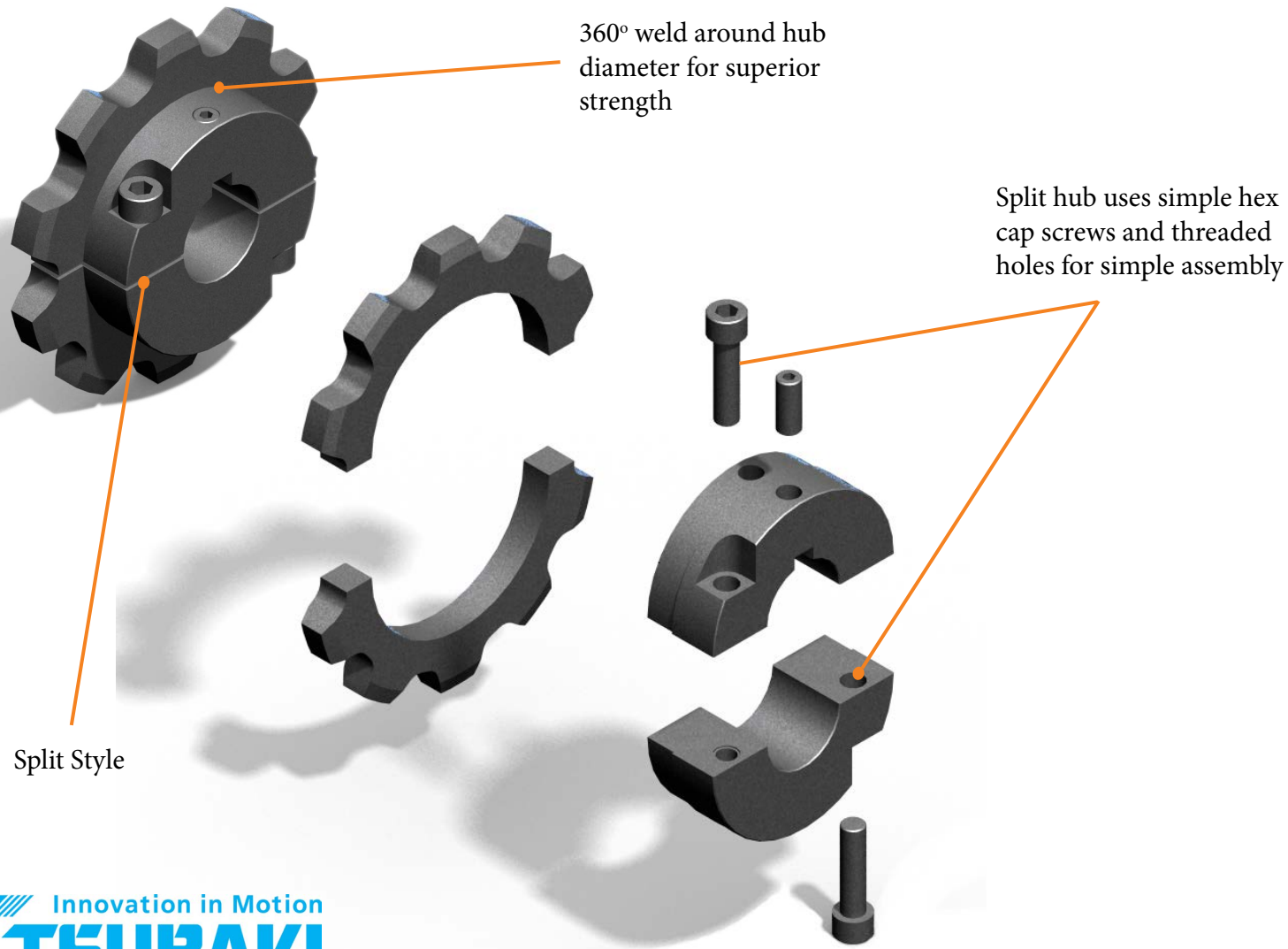


Stock Now Available in
Edmonton

The **LARGEST** sprocket manufacturer in Canada is **NOW OFFERING:**

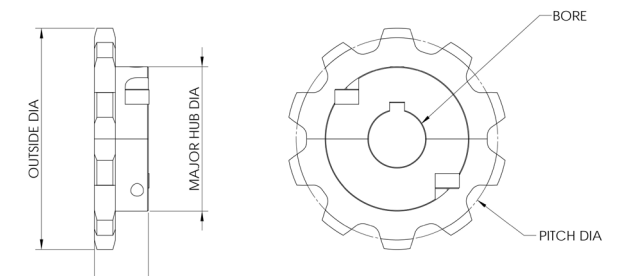
- Expanded range of 81X and 78 sprockets
- Maximum 2-day delivery on any quantity below 20 pieces
- Over-the-phone quote
- Competitive Pricing

Western Canada
Exclusive

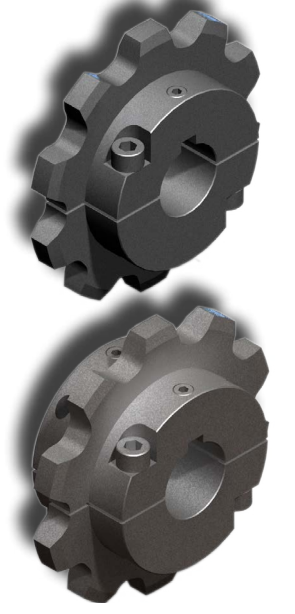
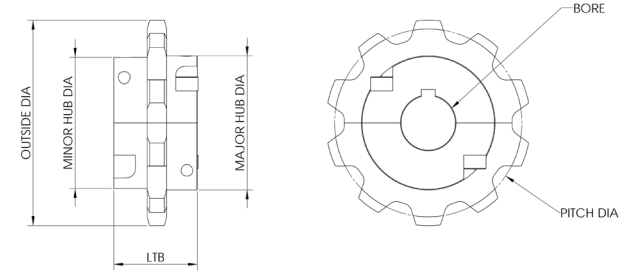


81X and 78 Sprocket Specifications

Type B Split Construction



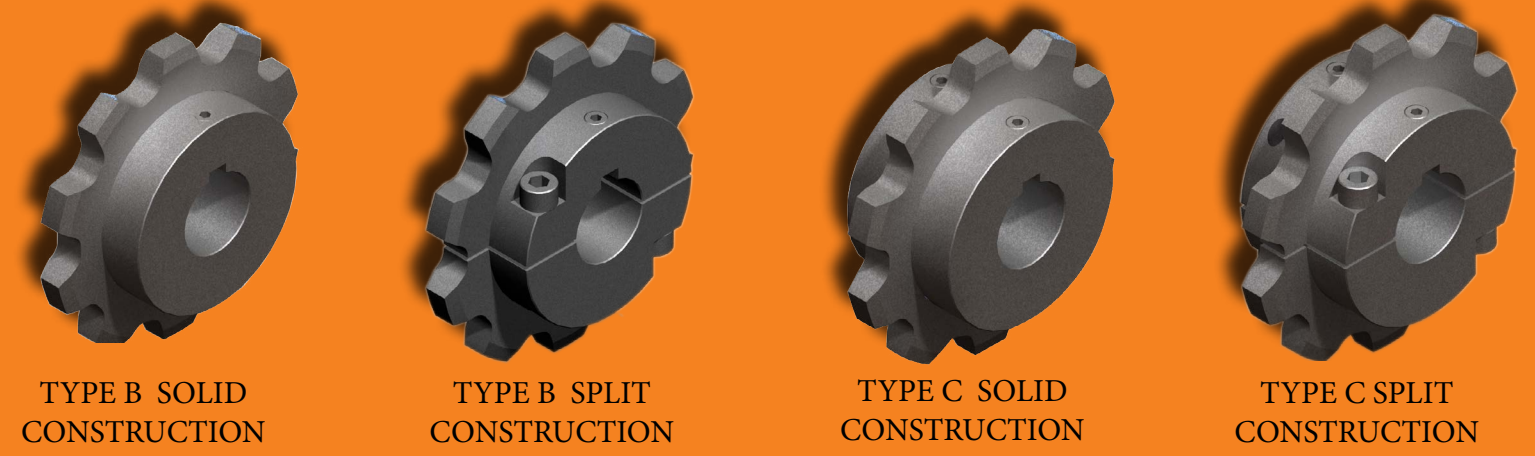
Type C Split Construction

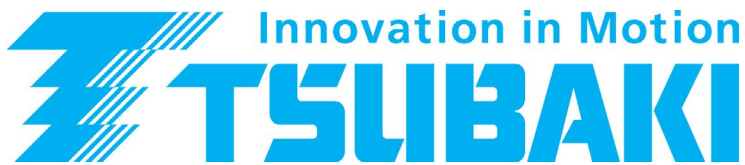


All dimensions are in inches unless otherwise stated.

Chain	DIMENSIONS			TYPE A			TYPE B			TYPE C			TYPE B/C - SOLID CONSTRUCTION				TYPE B/C - SPLIT CONSTRUCTION	
	Teeth	P.D.	O.D.	Catalogue Number	Stock Bore	Wt. (Lbs)	Catalogue Number	LTB:	Wt. (Lbs)	Catalogue Number	LTB:	Wt. (Lbs)	Stock Bore	Max Bore	Major Hub Dia	Minor Hub Dia (C-only)	Split Stock Bore	Split Max Bore
81X	8	6.818	7.429	81XA8	15/16	8	81XB8	2 1/8	11	81XC8	3 3/8	14	1	2 7/16	4 1/2	4 3/8	-	2 3/16
	9	7.628	8.298	81XA9	1 1/4	10	81XB9	2 3/8	13	81XC9	3 7/8	16	1 1/4	2 15/16	5 1/4	5 1/8	-	2 3/16
	10	8.443	9.160	81XA10	1 1/4	12	81XB10	2 3/8	18	81XC10	3 7/8	23	1 1/4	2 15/16	5 1/4	5 1/8	1 1/8	2 15/16
	11	9.261	10.015	81XA11	1 1/4	14	81XB11	2 3/8	20	81XC11	3 7/8	25	1 1/4	3 7/16	5 1/4	5 1/8	1 1/8	3 7/16
	12	10.080	10.867	81XA12	1 1/4	17	81XB12	2 3/8	23	81XC12	3 7/8	28	1 1/4	3 7/16	5 1/4	5 1/8	1 1/8	3 7/16
	13	10.900	11.571	81XA13	1 1/2	23	81XB13	2 3/8	36	81XC13	3 7/8	49	1 1/4	3 7/16	5 1/4	5 1/8	1 1/8	3 7/16
	14	11.725	12.561	81XA14	1 1/2	37	81XB14	2 3/8	40	81XC14	3 7/8	53	1 1/4	3 7/16	5 1/4	5 1/8	1 1/8	3 7/16
	15	12.549	13.404	81XA15	1 1/2	31	81XB15	2 3/8	45	81XC15	3 7/8	58	1 1/4	3 7/16	5 1/4	5 1/8	1 1/8	3 7/16
	16	13.371	14.253	81XA16	1 1/2	35	81XB16	2 3/8	49	81XC16	3 7/8	62	1 1/2	3 7/16	5 1/4	5 1/8	1 1/8	3 7/16
	20	16.678	17.603	81XA20	1 1/2	54	81XB20	2 3/8	77	81XC20	3 7/8	99	1 1/2	3 15/16	5 1/4	5 1/8	1 1/8	3 15/16
78	8	6.818	7.424	78A8	15/16	9	78B8	2 1/4	15	78C8	3 3/8	20	1	2 7/16	4 1/2	4 3/8	-	2 3/16
	9	7.628	8.293	78A9	1 1/4	11	78B9	2 1/2	20	78C9	3 7/8	28	1 1/4	2 15/16	5 1/4	5 1/8	-	2 3/16
	10	8.443	9.155	78A10	1 1/4	14	78B10	2 1/2	23	78C10	3 7/8	31	1 1/4	2 15/16	5 1/4	5 1/8	1 1/8	2 15/16
	11	9.261	10.010	78A11	1 1/4	17	78B11	2 1/2	26	78C11	3 7/8	34	1 1/4	3 7/16	5 1/4	5 1/8	1 1/8	3 7/16
	12	10.080	10.862	78A12	1 1/4	20	78B12	2 1/2	29	78C12	3 7/8	37	1 1/4	3 7/16	5 1/4	5 1/8	1 1/8	3 7/16
	13	10.902	11.710	78A13	1 1/2	23	78B13	2 1/2	34	78C13	3 7/8	44	1 1/4	3 7/16	5 1/4	5 1/8	1 1/8	3 7/16
	14	11.725	12.556	78A14	1 1/2	27	78B14	2 1/2	36	78C14	3 7/8	45	1 1/4	3 7/16	5 1/4	5 1/8	1 1/8	3 7/16
	15	12.549	13.399	78A15	1 1/2	31	78B15	2 1/2	41	78C15	3 7/8	51	1 1/4	3 7/16	5 1/4	5 1/8	1 1/8	3 7/16
	16	13.371	14.253	78A16	1 1/2	35	78B16	2 1/2	46	78C16	3 7/8	56	1 1/4	3 7/16	5 1/4	5 1/8	1 1/8	3 7/16
	20	16.678	17.598	78A20	1 1/2	54	78B20	2 1/2	78	78C20	3 7/8	101	1 1/4	3 15/16	5 1/4	5 1/8	1 1/8	3 15/16

NOTE: New hub designs have different dimensions than what were published in the general catalogue. Sprockets with less than 30 teeth are standard to be hardened.





TSUBAKI OF CANADA LIMITED

Head Office & Manufacturing Plant

1630 Drew Road, Mississauga, Ontario L5S 1J6 Canada
Phone: +1 (905) 676-0400 Facsimile: +1 (905) 676-0904
Toll Free: +1 (800) 263-7088

Edmonton Manufacturing & Warehouse

10035-56th Avenue, Edmonton, Alberta T6E 5L7 Canada
Phone: +1 (780) 438-6073 Facsimile: +1 (780) 436-4929

www.tsubaki.ca

CALL YOUR SALES REPRESENTATIVE!

Alberta: Sean Cuillierier
email: scuillierier@tsubaki.ca
cell: +1 (403) 461-6885

British Columbia: John Sharpe
email: jsharpe@tsubaki.ca
cell: +1 (604) 341-0283



CAT-81X78SPROCKET